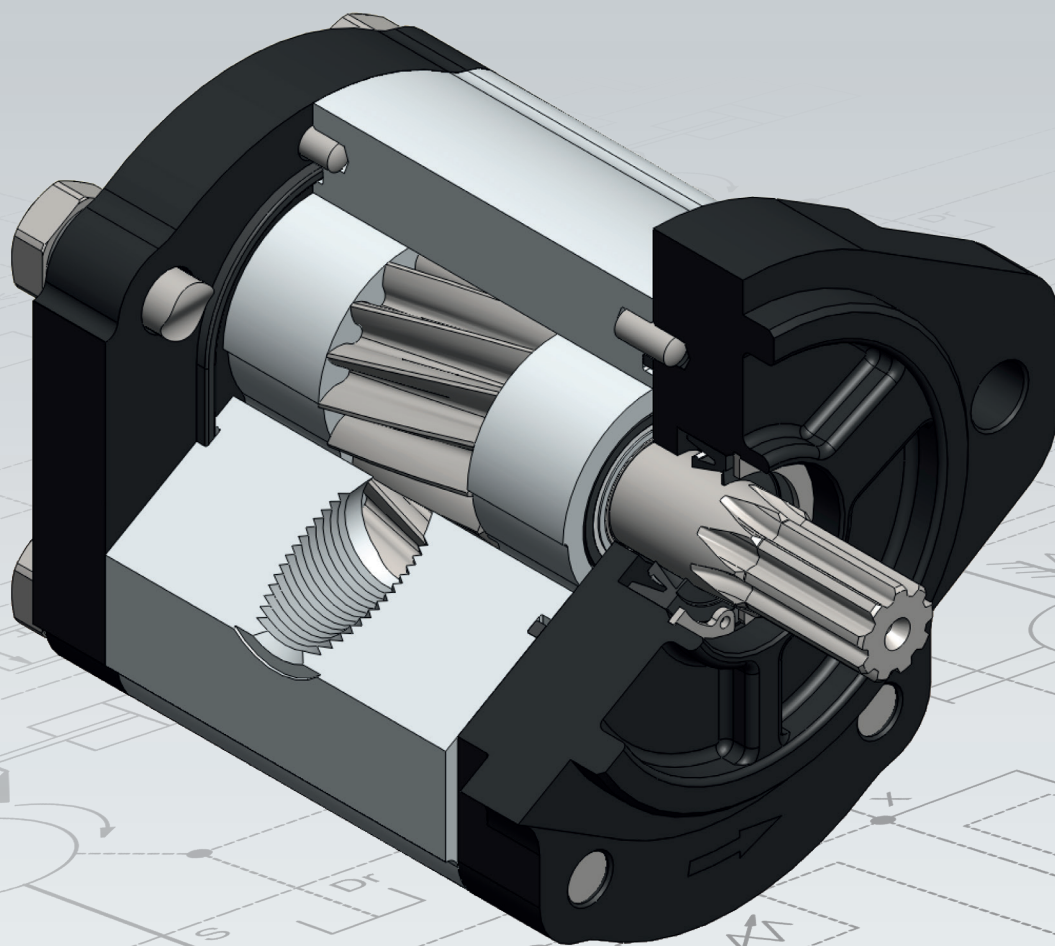


HYDAC

INTERNATIONAL

**Helical
Gear Pump
PGE**



■ EXCLUSION OF LIABILITY

This document was compiled to the best of our knowledge. Even though the utmost care has been taken, it is nevertheless possible that it may contain errors. Therefore please understand that in the absence of any provisions to the contrary hereinafter our warranty and liability – for any legal reasons whatsoever – are excluded in respect of the information in this document. In particular, we shall not be liable for lost profit or other financial loss.

This exclusion of liability does not apply in cases of intent or gross negligence. Moreover, it does not apply to defects which have been deceitfully concealed or whose absence has been guaranteed, nor in cases of culpable harm to life, physical injury and damage to health. If we negligently breach any material contractual obligation, our liability shall be limited to foreseeable damage. Claims due to product liability shall remain unaffected.

DESCRIPTION

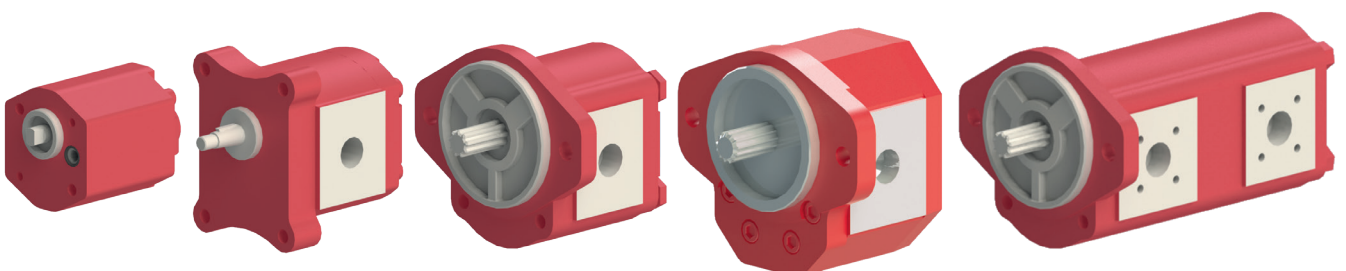
The helical external gear pumps of series PGE301, PGE302 and PGE303 represent the further development of our established external gear pump series PGE101, PGE102 and PGE103.

Thanks to the special helical gears, the series PGE301, PGE302 and PGE303 are able to achieve a significant reduction in the pump's inherent noise.

The pump series is therefore especially suitable for fields of application in which low noise generation and low flow pulsation are needed.

Double and multiple pumps are also available.

Furthermore, like the series PGE101, PGE102 and PGE103, these series feature a diverse range of variants.



FEATURES

- Displacement of 1.6 cm³/rev. – 60 cm³/rev. in closely stepped pump sizes
- Max. nominal pressure of up to 250 bar and peak pressure of up to 280 bar
- High maximum rotational speeds of up to 3500 rpm
- Lower noise emissions than standard gear pumps
- Low flow pulsation
- 1:1 replacement of standard external gear pumps
- Diverse range of variants

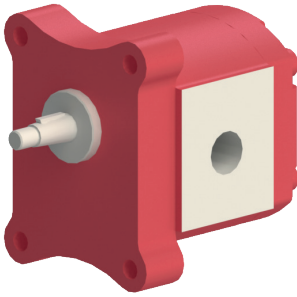


FIELDS OF APPLICATION

- Agriculture and forestry
- Special vehicles
- Commercial vehicles
- Industrial trucks / hoisting equipment
- Municipal machines
- Structural and civil engineering
- Machine and system engineering
- Mining



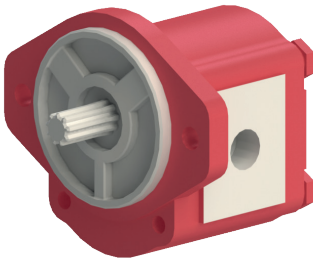
TECHNICAL DATA



1. PGE301

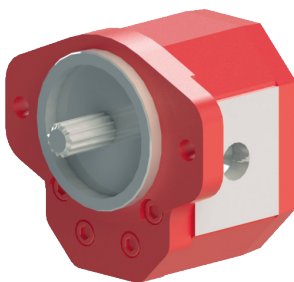
Series	Displacement [cm ³ /rev.]	Operating pressure			Rotational speed [rpm]
		Nominal pressure [bar]	Intermittent pressure [bar]	Peak pressure [bar]	
PGE301-160	1.6	250	280	300	3500
PGE301-200	2	250	280	300	3500
PGE301-250	2.5	250	280	300	3500
PGE301-315	3.15	250	280	300	3500
PGE301-365	3.65	250	280	300	3500
PGE301-420	4.2	250	280	300	3500
PGE301-500	5	250	280	300	3000
PGE301-610	6.1	200	220	230	2500
PGE301-740	7.4	180	190	200	2500

2. PGE302



Series	Displacement [cm ³ /rev.]	Operating pressure			Rotational speed [rpm]
		Nominal pressure [bar]	Intermittent pressure [bar]	Peak pressure [bar]	
PGE302-630	6.3	250	280	300	3500
PGE302-820	8.2	250	280	300	3500
PGE302-1000	10	250	280	300	3500
PGE302-1130	11.3	250	280	300	3500
PGE302-1200	12	250	280	300	3500
PGE302-1400	14	250	270	280	3500
PGE302-1500	15	250	270	280	3000
PGE302-1600	16	250	270	280	3000
PGE302-1730	17.3	230	250	270	3000
PGE302-1900	19	200	220	230	3000
PGE302-2200	22	190	200	210	2500
PGE302-2500	25	160	180	190	2500

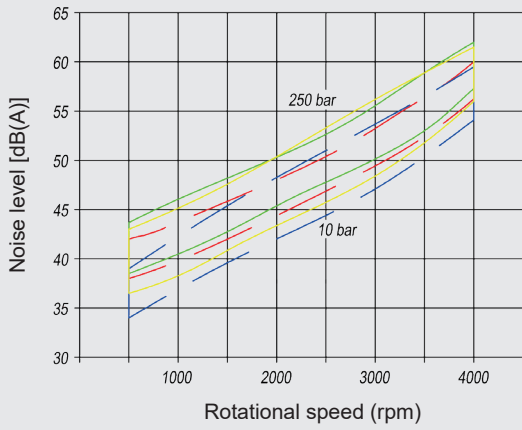
3. PGE303



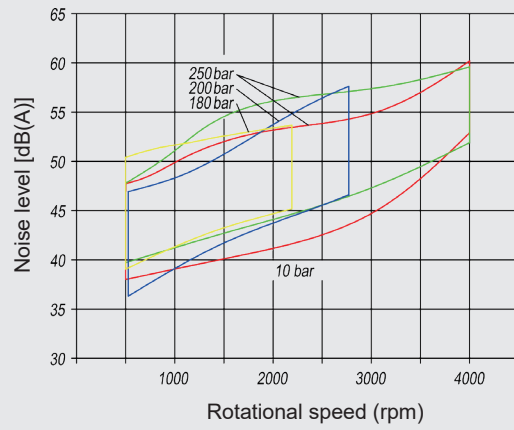
Series	Displacement [cm ³ /rev.]	Operating pressure			Rotational speed [rpm]
		Nominal pressure [bar]	Intermittent pressure [bar]	Peak pressure [bar]	
PGE303-2000	20	250	270	300	3000
PGE303-2250	22.5	250	270	300	3000
PGE303-2500	25	250	270	300	3000
PGE303-2800	28	250	270	300	3000
PGE303-3200	32	250	270	300	3000
PGE303-3600	36	250	260	280	3000
PGE303-4200	42	230	250	270	2500
PGE303-4600	46	210	230	250	2300
PGE303-5000	50	185	200	230	2100
PGE303-5500	55	165	180	200	1750
PGE303-6000	60	150	165	180	1750

PERFORMANCE CURVES

PGE301

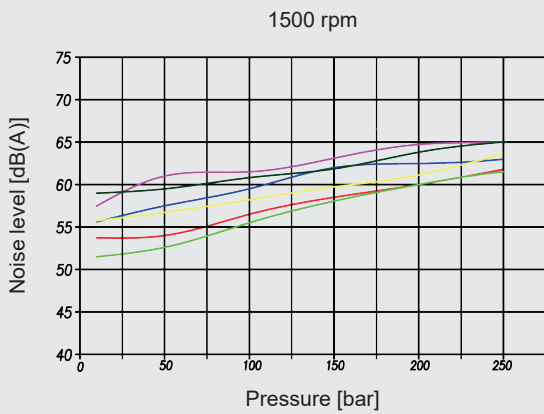


- 1.6 cm³/rev.
- 2.0 cm³/rev.
- 2.5 cm³/rev.
- 3.15 cm³/rev.

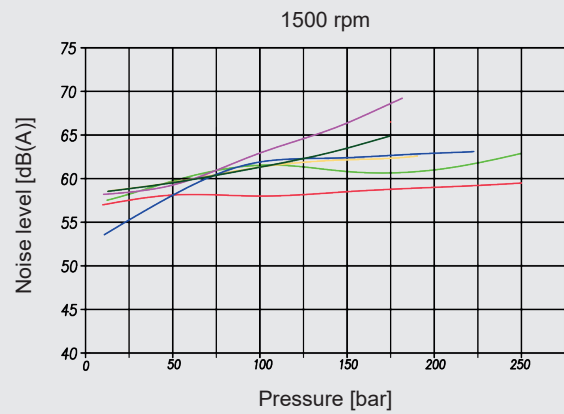


- 1.6 cm³/rev.
- 2.0 cm³/rev.
- 2.5 cm³/rev.
- 3.15 cm³/rev.

PGE302

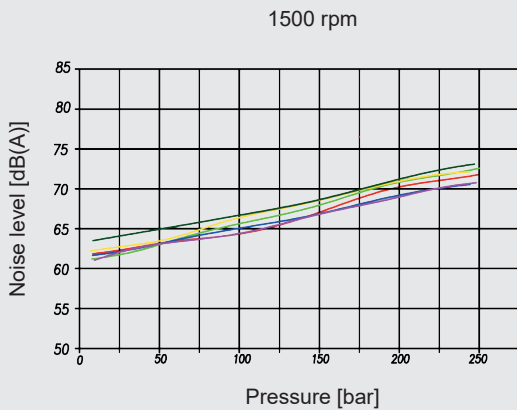


- 6.3 cm³/rev.
- 8.2 cm³/rev.
- 10 cm³/rev.
- 11.3 cm³/rev.
- 12 cm³/rev.
- 14 cm³/rev.

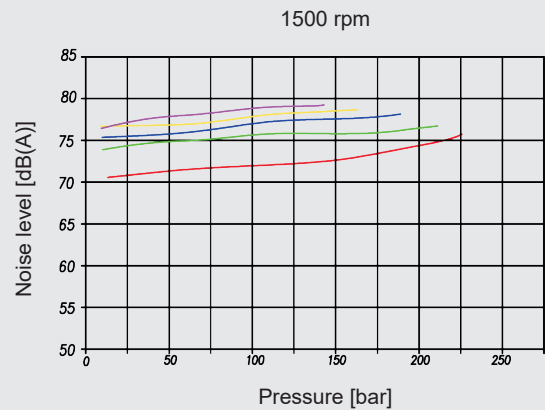


- 15 cm³/rev.
- 16 cm³/rev.
- 17.3 cm³/rev.
- 19 cm³/rev.
- 22 cm³/rev.
- 25 cm³/rev.

PGE303



- 20 cm³/rev.
- 22.5 cm³/rev.
- 25 cm³/rev.
- 28 cm³/rev.
- 32 cm³/rev.
- 36 cm³/rev.



- 42 cm³/rev.
- 46 cm³/rev.
- 50 cm³/rev.
- 55 cm³/rev.
- 60 cm³/rev.



Accumulators 30.000



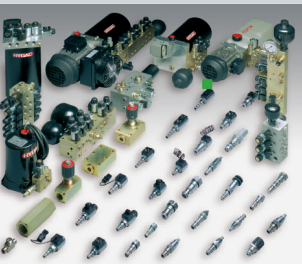
Filter Technology 70.000



Process Technology 77.000



Filter Systems 79.000



Compact Hydraulics 53.000



Accessories 61.000

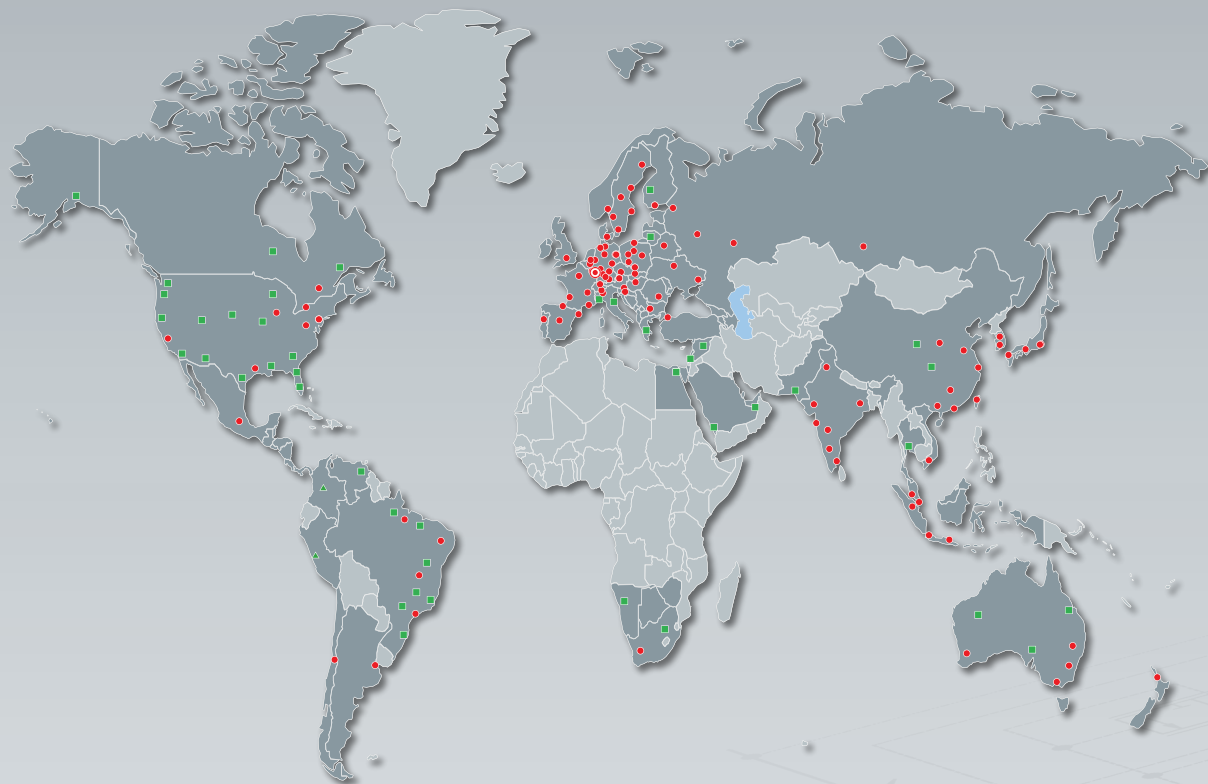


Electronics 180.000



Cooling Systems 57.000

Global presence. Local competence. www.hydac.com



- 📍 HYDAC Headquarters
- HYDAC Companies
- HYDAC Sales and Service Partners
- ▲ Free Sales Partners

HYDAC INTERNATIONAL

**HYDAC DRIVE CENTER
GmbH**

Kiesgräble 13
89129 Langenau
Germany

Phone: +49 7345 93360-0
Fax: +49 7345 93360-4190

E-mail: antriebe@hydac.com
Internet: www.hydac.com