

RICAMBI E ACCESSORI

SPARE PARTS & FITTINGS

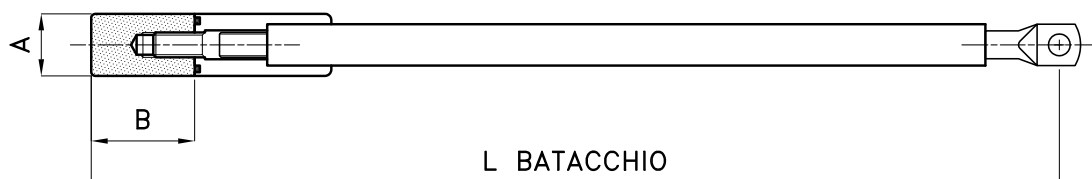




LA GAMMA • RANGE

| CONTATTI CATODICI A BATAACCHIO DANGLER CATHODE CONTACTS | | | | |
|--|------------------------|--------------------------------|------------|----------------------|
| Codice | Lunghezza Batacchio Mm | Sezione Cu | CAVO Ø mm | Dim. Testa Ottone |
| Code | Dangler Length Mm | Copper section mm ² | Cable Ø mm | Dim. Brass head (mm) |
| BT50060 | 600 | 50 | 20 | 30 x 50 |
| BT50065 | 650 | | | |
| BT50070 | 700 | | | |
| BT50075 | 750 | | | |
| BT50080 | 800 | | | |
| BT50085 | 850 | | | |
| BT50090 | 900 | | | |
| BT50095 | 950 | | | |
| BT50100 | 1000 | | | |
| BTU12070 | 700 | 120 | 27 | 40 x 60 |
| BTU12075 | 750 | | | |
| BTU12080 | 800 | | | |
| BTU12085 | 850 | | | |
| BTU12090 | 900 | | | |
| BTU12095 | 950 | | | |
| BTU12100 | 1000 | | | |
| BTU12110 | 1050 | | | |
| BTU12110 | 1100 | | | |
| BTU12115 | 1150 | | | |
| BTU12120 | 1200 | | | |
| BT18100 | 1000 | 180 | 31 | 40 x 80 |
| BT18105 | 1050 | | | |
| BT18110 | 1100 | | | |
| BT18115 | 1150 | | | |
| BT18120 | 1200 | | | |

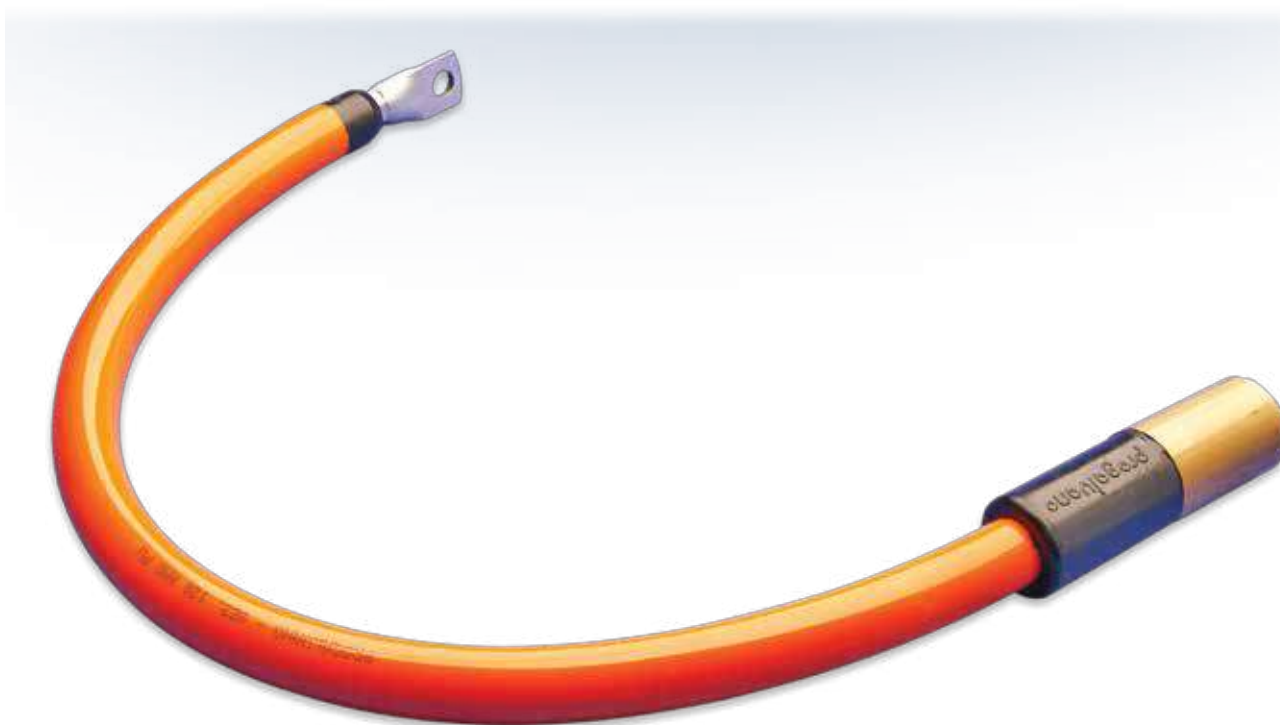
| Dimensioni consigliate Suggested dangler sizes | |
|---|----------------------------|
| ROTOR EXPORT 2000 | Batacchio rif. |
| Rotor Export 2000 | Ref. Dangler |
| 500/260 | 50mm ² /L=650 |
| 700/260 | 50mm ² /L=750 |
| 1000/260 | 120mm ² /L= 800 |
| 700/320 | 120mm ² /L= 800 |
| 1000/320 | 120mm ² /L=850 |
| 800/360 | 120mm ² /L=850 |
| 1000/360 | 120mm ² /L=900 |
| 1200/360 | 120mm ² /L=950 |
| 800/360-7 | 120mm ² /L=850 |
| 1000/360-7 | 120mm ² /L=900 |
| 1200/360-7 | 120mm ² /L=950 |
| 1000/420 | 120mm ² /L=950 |
| 1200/420 | 120mm ² /L=1000 |
| 1500/420 | 120mm ² /L=1050 |
| 1000/420-7 | 120mm ² /L=1000 |
| 1200/420-7 | 120mm ² /L=1050 |
| 1500/420-7 | 120mm ² /L=1100 |





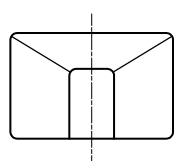
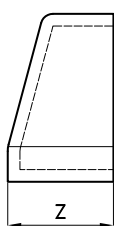
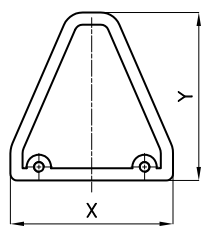
TESTE • HEADS

| Codice | MAT. | Sezione Cu | Dim. Testa |
|----------|----------------|----------------------------|---------------------|
| Code | | Cu section mm ² | Head Dimension (mm) |
| LURB-80A | Ottone / Brass | 50 | 30 x 50 |
| LURBF80A | Ferro / Iron | 50 | 30 x 50 |
| LURBX80A | INOX/St. Steel | 50 | 30 x 50 |
| LURB-81A | Ottone / Brass | 120 | 40 x 60 |
| LURBF81A | Ferro / Iron | 120 | 40 x 60 |
| LURBX81A | INOX/St. Steel | 120 | 40 x 60 |
| LURB-83A | Ottone / Brass | 180 | 40 x 80 |
| LURBF83A | Ferro / Iron | 180 | 40 x 80 |
| LURBX83A | INOX/St. Steel | 180 | 40 X 80 |



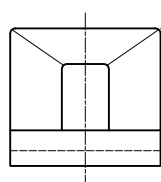
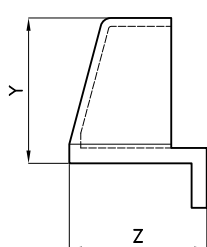
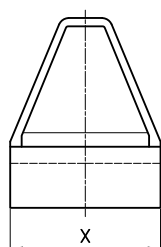


CUNEO IN PE • PE WEDGE



| Modello | Codice | X | Y | Z |
|---------|----------|-----|-----|----|
| Model | Code | | | |
| 500 | SAV-101A | 68 | 87 | 55 |
| 1000 | SAV-102A | 98 | 127 | 77 |
| 2000 | SAV-103A | 120 | 124 | 78 |

CUNEO IN OTTONE • BRASS WEDGE

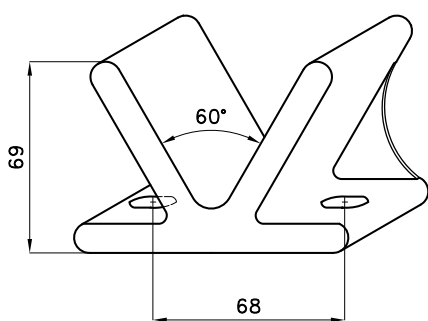


| Modello | Codice | X | Y | Z |
|---------|----------|-----|-----|-----|
| Model | Code | | | |
| 500 | FAVO-101 | 67 | 80 | 70 |
| 1000 | FAVO102 | 98 | 114 | 107 |
| 2000 | FAVO103 | 118 | 108 | 106 |

CUNEO IN RAME 98% • 98% CU WEDGE

| | | | | |
|------|---------|-----|-----|-----|
| 2000 | FAVC103 | 118 | 108 | 106 |
|------|---------|-----|-----|-----|

SUPPORTO A "V" • "V" SUPPORT



| MAT. | Codice |
|---------------|----------|
| | Code |
| OTTONE /brass | FAV0001 |
| PE | SAV-001A |