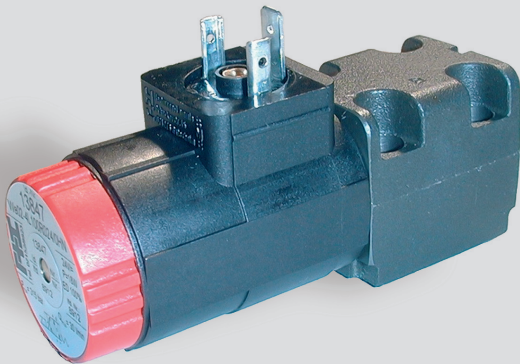


Voith Turbo

**VOITH**

## **4/2, 4/3 Directional Control Valve NG 4, ISO 4401 electrically operated, directly controlled, horizontal**



- directly controlled piston valve
- compact design
- short switching time
- low internal leakage
- pressure sealed oil-immersed solenoids for direct or alternating current
- easy service: solenoid can be changed without leakage while the valve is under system pressure
- solenoids can be rotated 3 x 90°, allowing alternative connector positions
- only one plug, even with 4/3 directional control valves
- port connection pattern according to ISO 4401

 **hydraulic**

# Symbol

Symbol	4/2 Directional Control Valves	Symbol	4/3 Directional Control Valves
01		04	
02		05	
03		06	

# Electrical Connections

Single Acting Solenoid	Double Acting Solenoid

plug type: DIN 43650, design A

# Options

- alternativ voltages
- alternativ symbols - data sheet: 14607-DSH
- alternativ plugs
- alternativ solenoid position
- manual emergency operation even for 4/3 directional control valves

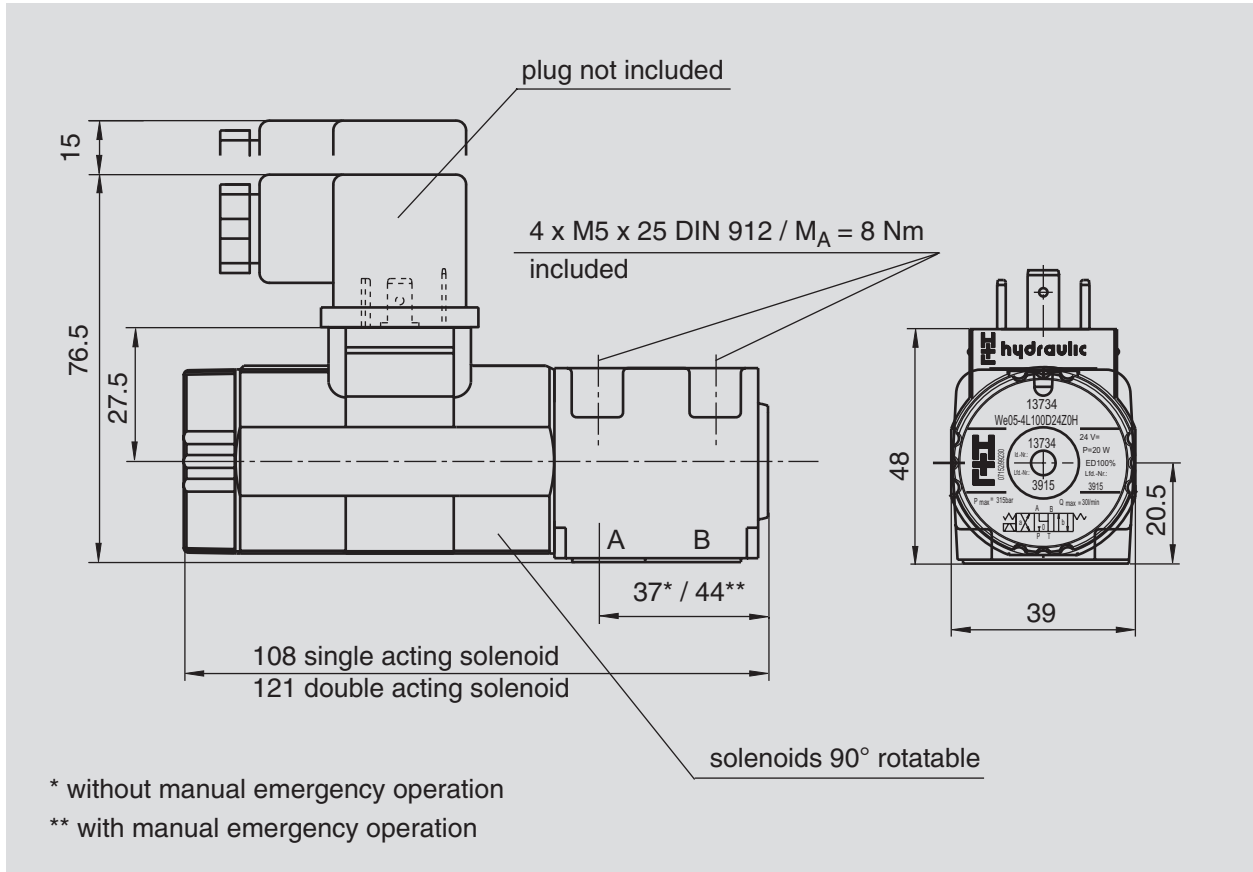
## Technical Data

General			
Symbol		please see symbol diagram	
Type of valve		piston valve	
Operation		electric	
Mounting		4 x M5 x 25 DIN912	
Connection of ports		mounting plate	
Mounting positions		mountable in any positions	
Ambient temperature	°C	-5 to +50	
Mass valve	kg	0.68 with single acting solenoid 0.77 with double acting solenoid	
Mass mounting plate	kg	0.8	
Hydraulic			
Operation pressure range			
ports P, A, B	bar	315	
port T	bar	150	
Hydraulic oil temperature	°C	-10 to +70	
Viscosity range	mm <sup>2</sup> /s	10 to 300	
max. flow	l/min	30	
Electric			
Voltage (±10%)		24V DC	230V, 50Hz AC
Switching time on *	ms	17	25
Switching time off **	ms	17	25
Power consumption P20	W	20	
Start up peak P20	VA		64
Duty factor	%	100	100
Protection system DIN 40050		IP65	IP65

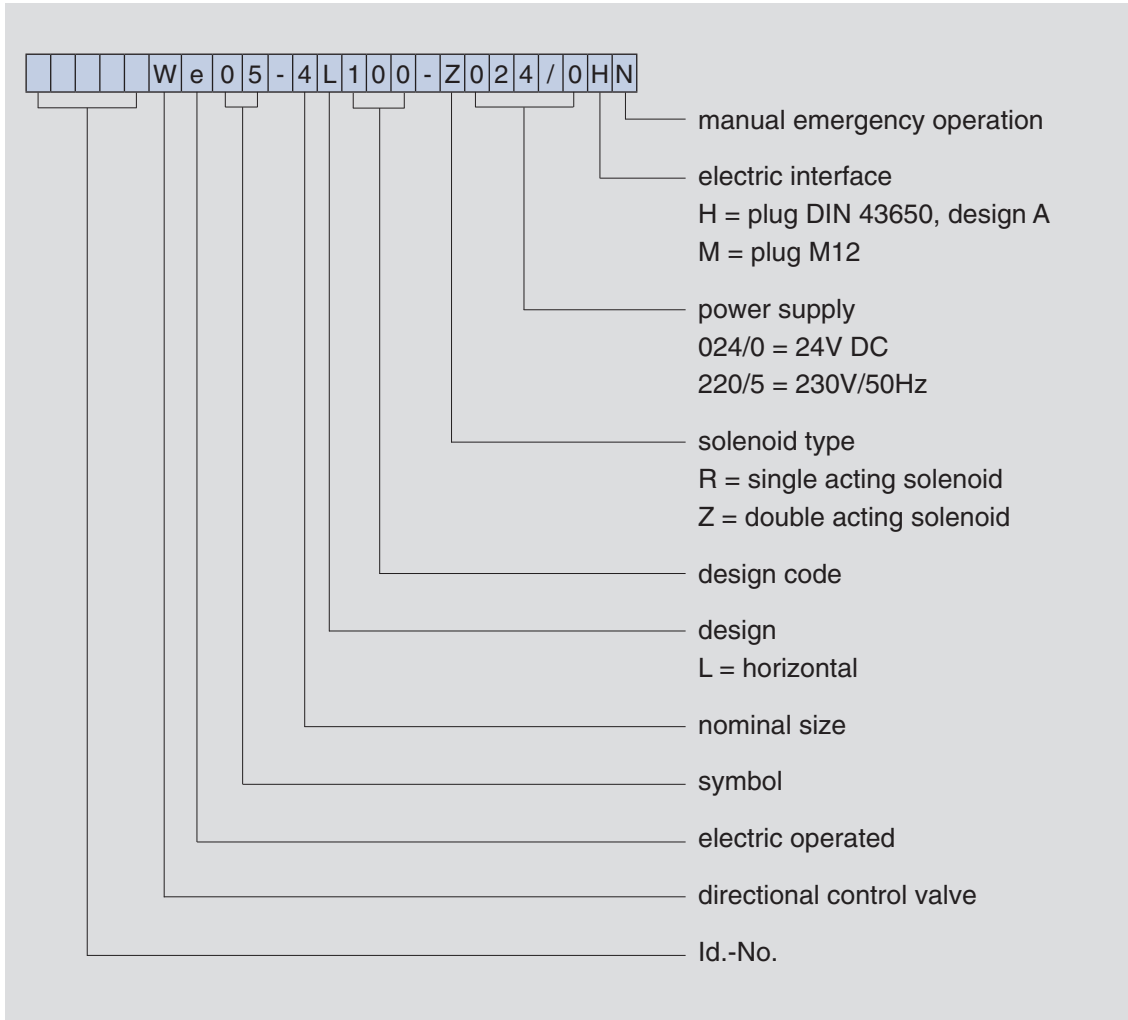
\* at 24V DC ± 5%

\*\* at terminal voltage = -50V at free circuit

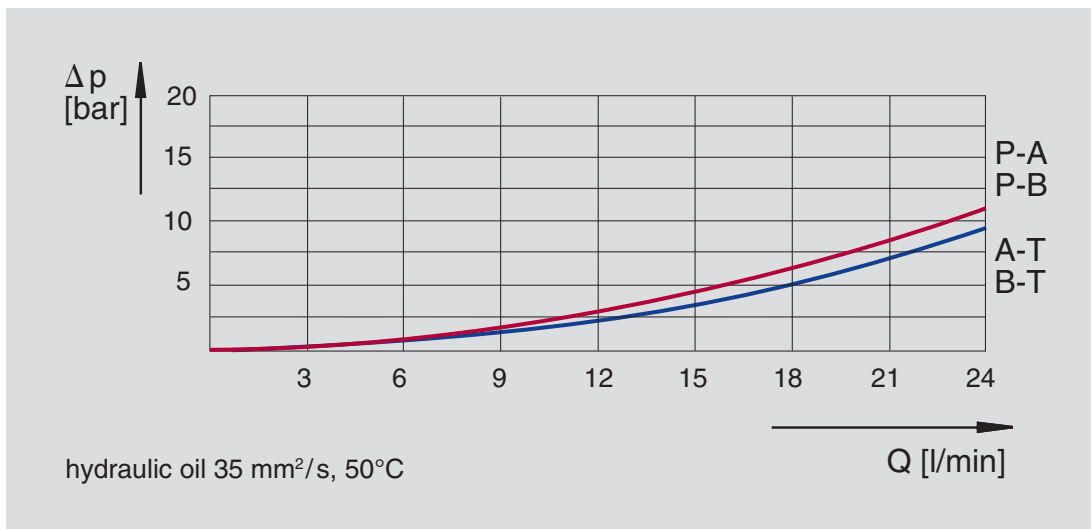
# Dimensioned Drawing



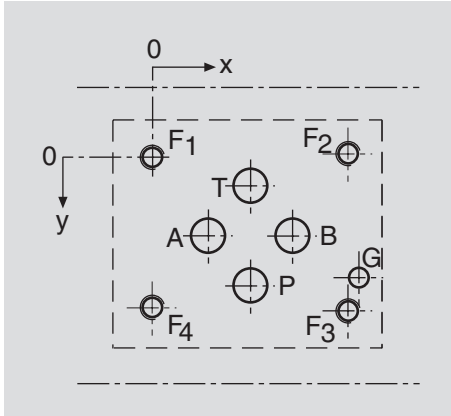
# Type Code



# Characteristic curve



# Port Connection Pattern NG 4 ISO 4401



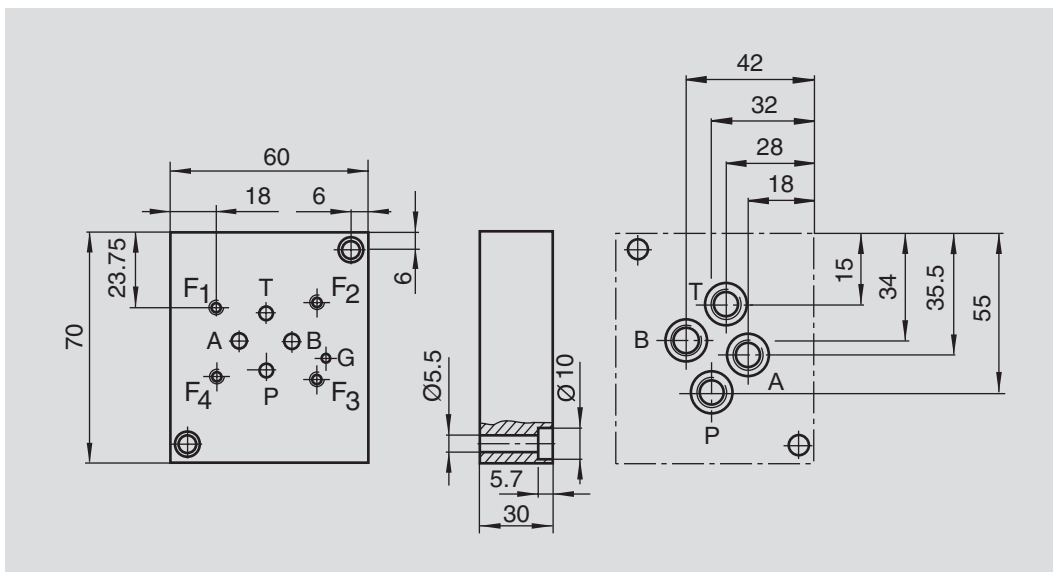
view: fastening side of mounting plate

	P	A	T	B	F1	F2	F3	F4	G
Ø max [mm]	4.5	4.5	4.5	4.5	-	-	-	-	3.4
x [mm]	12	4.3	12	19.7	0	24	24	0	26.5
y [mm]	20.25	11.25	2.25	11.25	0	-0.75	23.25	22.5	17.75

F: M5, thread depth min. 1,5 x Ø

G: bore hole depth min. 1,5 x Ø

## Single-Unit Mounting Plate



Order number single-unit mounting plate:

**PW4M-G1-400**, pipe connections R1/8"

**PW4M-G2-400**, pipe connections R1/4"

Multiple-unit mounting plate on request.

Voith Turbo H + L Hydraulic GmbH & Co. KG  
Schuckertstraße 15  
71277 Rutesheim, Germany  
Tel. +49 7152 992-3  
Fax +49 7152 992-400  
sales-rut@voith.com  
[www.voithturbo.com/hydraulic-systems](http://www.voithturbo.com/hydraulic-systems)

**VOITH**  
*Engineered reliability.*