

LCV-20-P

单向阀 锥阀型

说明 DESCRIPTION

A cartridge-style poppet-type check valve

锥阀式螺纹插装单向阀

工作 OPERATION

Pressure at ① overcomes the spring-bias poppet and allows free flow from ① to ② .

Flow in the opposite direction, from ② to ① ,is blocked by the poppet.

当在①口的压力超过开启压力，①到②开启；

在反方向，②到①关闭。

技术参数 SPECIFICATIONS

工作压力(Operating Pressure): 350bar

流量(Flow): See PRESSURE DROP VS.FLOW graph.

内泄漏(Internal Leakage): 5 drops/min(滴/分). max. at 350bar

开启压力(Crack Pressures): 0.3=0.3bar

1.4=1.4bar

4.5=4.5bar

温度(Temperature): -40°F to +250°F(-40°C to +120°C)

过滤(Filtration): See page (参见) N-1

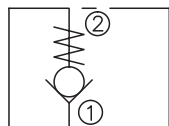
油液(Fluids): Mineral-based fluids with viscosities of 7.4 to 420 cSt.(矿物油粘度)

插孔(Cavity): 20-2,See page M-5

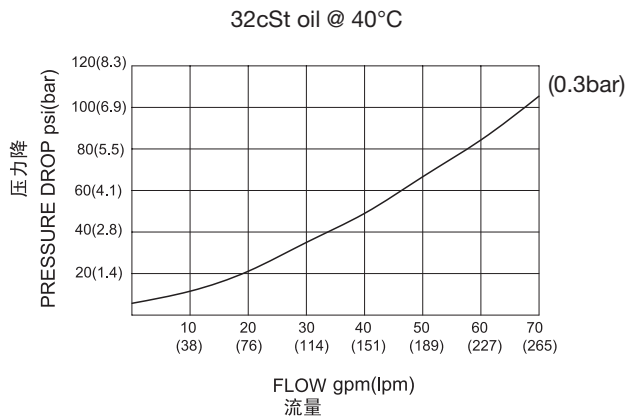
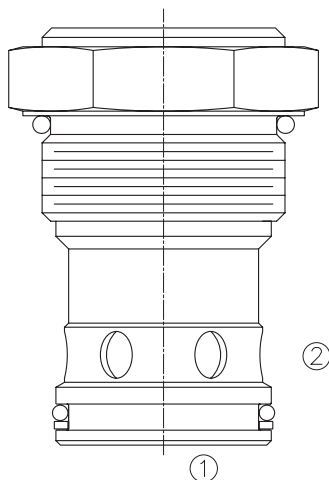
阀块材料(Body Material):

Steel & Ductile iron rated to 350bar 钢和球铁允许使用最大压力350bar

SYMBOL



压力 - 流量曲线 PRESSURE DROP VS.FLOW



订货代号 TO ORDER

LCV - 20 - P - * * - * *

┌───┐
┌───┐
┌───┐
┌───┐
┌───┐

1
2
3
4
5

1 功能
LCV= 单向阀 Check Valve

2 规格 Size
20=20 规格

3 类型
P= 锥阀型 Poppet

4 开启压力 Cracking Pressure
0.3=0.3bar
1.4=1.4bar
4.5=4.5bar

5 阀块油口 Body Porting
空白 Blank= 不带阀块 None
16T=SAE16
20T=SAE20

※ 阀块详见章节 K-11
其它螺纹油口也是可选择的
Other Porting is Available



安装尺寸 INSTALLATION DIMENSIONS

Unit=Millimeters

